



STOVE AND ACCESSORIES RANGE  
RETAIL PRICE LIST JUNE 2021

S T O V E S   Y O U   C A N   R E A L L Y   E N J O Y



## Wychwood Woodburner

Code	Model	Finish	Price	VAT@20%	RRP
EEI classification for ecolabelling 2018: A+					
WYC1WB-MB	Wychwood 5Kw Smoke Exempt stove	Matt Black	1082.50	216.50	1299.00



## Earlswood III Multifuel

Code	Model	Finish	Price	VAT@20%	RRP
EEI classification for ecolabelling 2018: A+					
EW3	Earlswood III 5Kw Smoke Exempt stove	Matt Black	816.67	163.33	980.00



## Astwood II Multifuel

Code	Model	Finish	Price	VAT@20%	RRP
EEI classification for ecolabelling 2018: A+					
AW2	Astwood II 5Kw Smoke Exempt stove	Matt Black	958.33	191.67	1150.00



## Malvern II Multifuel

Code	Model	Finish	Price	VAT@20%	RRP
EEI classification for ecolabelling 2018: A+					
MAL2MF	Malvern II 5Kw Smoke Exempt stove	Matt Black	825.00	165.00	990.00



## Malvern II Classic Multifuel

Code	Model	Finish	Price	VAT@20%	RRP
EEI classification for ecolabelling 2018: A+					
MAL2CL2	Malvern II Classic 5Kw Smoke Exempt stove	Matt Black	920.83	184.17	1105.00



## Buxton II Multifuel

Code	Model	Finish	Price	VAT@20%	RRP
EEI classification for ecolabelling 2018: A+					
BUX2MF	Buxton II 5Kw Smoke Exempt stove	Matt Black	966.67	193.33	1160.00

## Multifuel Steel Stoves Inserts



### Tenbury Multifuel

Code	Model	Finish	Price	VAT@20%	RRP
EEL classification for ecolabelling 2018: A+					
T400DA	Tenbury T400 5Kw Smoke Exempt insert	Matt Black	829.17	165.83	995.00
T550	Tenbury T550 5Kw Smoke Exempt insert	Matt Black	1133.33	226.67	1360.00

## Steel Stoves - Options and Accessories



### Heat Shield for Wychwood

Code	Description	Finish	Price	VAT@20%	RRP
WYCHHS	Heat Shield for Wychwood model	Matt Black	66.67	13.33	80.00



### Leg Sets for Steel Stoves

Code	Description	Finish	Price	VAT@20%	RRP
M4311-985A	Wychwood Leg Set	Matt Black	67.92	13.58	81.50



### Log Stores for Steel Stoves

Code	Description	Finish	Price	VAT@20%	RRP
EW3LS	Log store for Earlswood model	Matt Black	137.50	27.50	165.00
MAL2LS	Log Store for Malvern model	Matt Black	145.83	29.17	175.00
WYCLS	Log Store for Wychwood model	Matt Black	207.50	41.50	249.00



### Handle Options for Steel Stoves (excluding Tenbury)

Code	Description	Finish	Price	VAT@20%	RRP
W-5790-258	Pewter Handle Option (Wychwood model only)		40.83	8.17	49.00
9900-1142	Brushed Steel Handle Option (excluding Wychwood)		41.67	8.33	50.00
E5790-146	Black Handle Option (excluding Wychwood)		15.00	3.00	18.00





## Oakdale Multifuel

Code	Model	Finish	Price	VAT@20%	RRP
EEI classification for ecolabelling 2018: A					
FB1BK	Oakdale 5Kw Smoke Exempt stove	Matt Black	870.83	174.17	1045.00
FB1CM	Oakdale 5Kw Smoke Exempt stove	Cream Enamel	1108.33	221.67	1330.00



## Birchdale Multifuel

Code	Model	Finish	Price	VAT@20%	RRP
EEI classification for ecolabelling 2018: A					
FB4BK	Birchdale 5Kw Smoke Exempt stove	Matt Black	858.33	171.67	1030.00
FB4AW	Birchdale 5Kw Smoke Exempt stove	Arctic White Enamel	1100.00	220.00	1320.00



## Ashdale Multifuel

Code	Model	Finish	Price	VAT@20%	RRP
EEI classification for ecolabelling 2018: A+					
FB2BK	Ashdale 7Kw Smoke Exempt stove	Matt Black	1045.83	209.17	1255.00
FB2BM	Ashdale 7Kw Smoke Exempt stove	Buttermilk Enamel	1370.83	274.17	1645.00
FB2CM	Ashdale 7Kw Smoke Exempt stove	Cream Enamel	1370.83	274.17	1645.00
FB2GB	Ashdale 7kw Smoke Exempt stove	Gloss Black Enamel	1370.83	274.17	1645.00



## Rowandale Multifuel

Code	Model	Finish	Price	VAT@20%	RRP
EEI classification for ecolabelling 2018: A					
FB3BK	Rowandale 5Kw Smoke Exempt stove	Matt Black	1050.00	210.00	1260.00
FB3CM	Rowandale 5Kw Smoke Exempt stove	Cream Enamel	1266.67	253.33	1520.00
FB3GB	Rowandale 5Kw Smoke Exempt stove	Gloss Black Enamel	1266.67	253.33	1520.00

\*When fitted with optional EcoDesign kit (see page 5).



## Larchdale Woodburner

Code	Model	Finish	Price	VAT@20%	RRP
EEI classification for ecolabelling 2018: A					
FB6BK	Larchdale 9Kw Smoke Exempt stove	Matt Black	1479.17	295.83	1775.00

## Elmdale Woodburning Cast Iron Inglenook Stove and Canopy



Code	Model	Finish	Price	VAT@20%	RRP
EEI classification for ecolabelling 2018: A					
FB5BK	Elmdale 9 Kw inglenook stove with canopy	Matt Black	1579.17	315.83	1895.00

## Eco Design Ready kits for Rowandale Cast Iron Stove



Code	Description	Price	VAT@20%	RRP
FB3-ECOKIT	EcoDesign Ready Kit for Rowandale	60.00	12.00	72.00
FB3-ECOKITFITTED	EcoDesign Ready Kit for Rowandale (fitted to stove)	83.33	16.67	100.00

## Gloss Enamel Flue Pipe Section



Code	Description	Finish	Price	VAT@20%	RRP
<b>Cream Gloss Enamel Finish</b>					
F1000MCM	1000mm x 125mm dia flue pipe	Cream	63.33	12.67	76.00
F45CMND	45° bend without door	Cream	50.00	10.00	60.00
F500MCM	500mm x 125mm dia flue pipe	Cream	44.17	8.83	53.00
F90CM	90° T piece	Cream	70.83	14.17	85.00

### Gloss Black Enamel Finish

F1000MGB	1000mm x 125mm dia flue pipe	Gloss Black	60.83	12.17	73.00
F45GBND	45° bend without door	Gloss Black	47.50	9.50	57.00
F500MGB	500mm x 125mm dia flue pipe	Gloss Black	41.67	8.33	50.00
F90GB	90° T piece	Gloss Black	68.33	13.67	82.00

### Arctic White Enamel Finish

F1000MAW	1000mm x 125mm dia flue pipe	Arctic White	60.83	12.17	73.00
F45AWND	45° bend without door	Arctic White	47.50	9.50	57.00
F500MAW	500mm x 125mm dia flue pipe	Arctic White	41.67	8.33	50.00
F90AW	90° T piece	Arctic White	68.33	13.67	82.00



## Neo Multifuel and Woodburning Contemporary Stoves

NEO1P ECO



NEO3C ECO



NEO1F ECO



### Neo 1 Woodburner - single glass panel



Code	Model	Finish	Price	VAT@20%	RRP
EEI classification for ecolabelling 2018: A+					
NEO1P ECO	Neo 1 ECO 5 Kw with pedestal base	Matt Black	1490.83	298.17	1789.00
NEO1C ECO	Neo 1 ECO 5 Kw with cupboard base	Matt Black	1500.00	300.00	1800.00
NEO1F ECO	Neo 1 ECO 5 Kw floor standing model	Matt Black	1358.33	271.67	1630.00

### Neo 3 Woodburner - triple glass panels



Code	Model	Finish	Price	VAT@20%	RRP
EEI classification for ecolabelling 2018: A+					
NEO3P ECO	Neo 3 ECO 5 Kw with pedestal base	Matt Black	1557.50	311.50	1869.00
NEO3C ECO	Neo 3 ECO 5 Kw with cupboard base	Matt Black	1579.17	315.83	1895.00
NEO3F ECO	Neo 3 ECO 5 Kw floor standing model	Matt Black	1483.33	296.67	1780.00

### Options for Neo ECO stoves



N99-0201	Stabilising bracket (set of 2) to suit the NEO1P/NEO3P	24.99	5.00	29.99
----------	--	-------	------	-------



9900-0300	Log store conversion trim for NEO1C/NEO3C	54.17	10.83	65.00
-----------	---	-------	-------	-------



N-GLASSTOP	Black glass top plate for multifuel and gas NEO stoves (Top flue exit only)	129.17	25.83	155.00
------------	---	--------	-------	--------



## Multifuel and Woodburning Contemporary Stoves



### Trinity Woodburner single and triple glass panels

Code	Model	Finish	Price	VAT@20%	RRP
EEI classification for ecolabelling 2018: A+					
Trinity 1 ECO	Trinity 1 5 Kw with single glass panel	Matt Black	1000.00	200.00	1200.00
Trinity 3 ECO	Trinity 3 5 Kw with three glass panels	Matt Black	1058.33	211.67	1270.00

### Solis Multifuel

Code	Model	Finish	Price	VAT@20%	RRP
EEI classification for ecolabelling 2018: A+					
SOLIS	Solis 5 Kw with steel top	Matt Black	1375.00	275.00	1650.00

### Novus Multifuel

Code	Model	Finish	Price	VAT@20%	RRP
EEI classification for ecolabelling 2018: A+					
Novus	Novus 5 Kw	Matt Black	1466.67	293.33	1760.00

### Options for Neo ECO, Trinity and Solis stoves

9900-2618	Heat shield for Neo Eco and Trinity stoves only	79.17	15.83	95.00
S5540-385	Black glass top plate for Solis stove only	129.17	25.83	155.00



## Gas Stoves



Note: prices for the balanced flue gas stoves do not include the flue kits. Please remember to order the required flue kit when ordering your stove.



### Wychwood Balanced Flue Gas Stove including Puck Handset

Code	Model	Finish	Price	VAT@20%	RRP
WYC1NG	Wychwood Natural Gas Balanced Flue Stove	Matt Black	1762.50	352.50	2115.00
WYC1LPG	Wychwood LPG Balanced Flue Stove	Matt Black	1762.50	352.50	2115.00



### NEO3P Balanced Flue Gas Stove including Symax Handset

Code	Model	Finish	Price	VAT@20%	RRP
NEO3PNG	Neo3P Natural Gas Balanced Flue Stove	Matt Black	2462.50	492.50	2955.00
NEO3PLPG	Neo3P LPG Balanced Flue Stove	Matt Black	2462.50	492.50	2955.00



### NEO3F Balanced Flue Gas Stove including Symax Handset

Code	Model	Finish	Price	VAT@20%	RRP
NEO3FNG	Neo3F Natural Gas Balanced Flue Stove	Matt Black	2362.50	472.50	2835.00
NEO3FLPG	Neo3F LPG Balanced Flue Stove	Matt Black	2362.50	472.50	2835.00

## Gas Stoves - Balanced Flue Kits



### Balanced Flue Up and Out Kit\*

Code	Model	Finish	Price	VAT@20%	RRP
GFK1	Balanced Flue Up and Out Kit	Stainless Steel	370.00	74.00	440.00
GFK1B	Balanced Flue Up and Out Kit	Black	441.67	88.33	530.00
GF-FPB	Gas Flue Kit 0-10° Finishing Plate 150mm	Black	62.50	12.50	75.00

\*A guard will be required for below 2m



### Balanced Flue Renovation System Kit

Code	Model	Finish	Price	VAT@20%	RRP
GFK3B	Balanced Flue Renovation System Kit	Black	408.33	81.67	490.00



### Balanced Flue Snorkel Kit

Code	Model	Finish	Price	VAT@20%	RRP
GFK2	Balanced Flue Snorkel Kit	Black	408.33	81.67	490.00
GF-FPB	Gas Flue Kit 0-10° Finishing Plate 150mm	Black	62.50	12.50	75.00



## Wychwood Gas Stoves - Options and Accessories



Code	Description	Finish	Price	VAT@20%	RRP
W-BG	Black Glass Internal Back Panel	Gloss Black	50.00	10.00	60.00

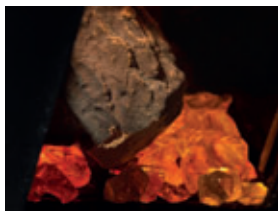


Code	Description	Price	VAT@20%	RRP
SYMAX-HS	Symax Remote Control Handset (upgrade from Puck handset)	120.83	24.17	145.00



Code	Description	Price	VAT@20%	RRP
MYFIRE	My Fire Module	245.83	49.17	295.00

## Neo Gas Stoves - Options and Accessories



Code	Description	Price	VAT@20%	RRP
N-LED	LED Light System	137.50	27.50	165.00



Code	Description	Finish	Price	VAT@20%	RRP
N-BG	Black Glass Internal Back Panel	Gloss Black	45.83	9.17	55.00



Code	Description	Price	VAT@20%	RRP
N-VP	Vermiculite Inner Back Panel	25.00	5.00	30.00



Code	Description	Finish	Price	VAT@20%	RRP
N-GLASSTOP	Black glass top plate for gas and multifuel NEO stoves (Top flue exit only)		129.17	25.83	155.00



Code	Description	Price	VAT@20%	RRP
MYFIRE	My Fire Module	245.83	49.17	295.00



Wychwood woodburning stove 5 Kw.



## Stove-Care Accessories and Direct Air Kits

### General Stove Accessories



Code	Description	Finish	Price	VAT@20%	RRP
ACRGLASSCL	ACR Glass Bright glass cleaner	750ml spray	7.92	1.58	9.50
OD-411-84-14	Heat Resistant Stove Gloves pair	Black	16.67	3.33	20.00
LOGTIDYADV	ACR Log Tidy Advance	Forest Green	16.67	3.33	20.00

### Stove Paint for Steel, Neo and Traditional Black Cast Iron Stoves



Code	Description	Finish	Price	VAT@20%	RRP
PAINT-ACR400	ACR Steel Stove Paint	Matt Black 400ml	17.50	3.50	21.00
PAINT-SG400T	ACR Steel Stove Paint for Wychwood	Sterling Grey 400ml	20.83	4.17	25.00
PAINT-NEO	ACR Neo Stove Paint	Matt Black 400ml	16.25	3.25	19.50
PAINTACRCAST	ACR Cast Stove Paint	Matt Black 400ml	18.33	3.67	22.00

### Direct Air Kits for Steel, Cast Iron and Neo Stoves



Code	Description	Finish	Price	VAT@20%	RRP
DA80	Direct Air Kit 80mm diameter	N/A	66.67	13.33	80.00
DA100	Direct Air Kit 100mm diameter	N/A	45.83	9.17	55.00



